

**essilor**

**CUSTOM CONTACT LENS  
SPECIALISTS**



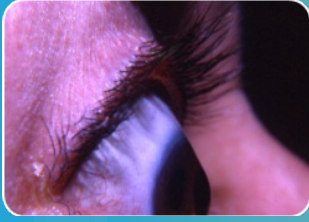
# **Scleral Fitting System**

**Fitting Guide**



# Scleral Fitting System

## Fitting Guide



**50 to 55D** - start with 48D Trial or E lens in ProLook set  
**55 to 65D** - start with 52 lens  
**65 and up** - start with 54 lens



Use K readings temporal to non-operated portion of cornea and add 3 Diopters



Select an initial lens of Mean K +2.00 Diopters

\*\*most newer practitioners think about things now in sag versus diopters. Consider changing select initial diagnostic lens with a sag of ... versus BC.

### OVERALL SAGS FOR JUPITER LENSES

DIAMETER ( <i>corneal chamber</i> )	JUPITER 15.6 (13.8)	JUPITER 18.2 (14.2)
BASE 40.00	3,891	5,008
41	3,963	5,076
42	4,034	5,142
43	4,108	5,211
44	4,183	5,281
45	4,259	5,351
46	4,336	5,422
47	4,417	5,495
48	4,499	5,569
49	4,581	5,642
50	4,668	5,719
51	4,754	5,795
52	4,846	5,875
53	4,937	5,954
54	5,034	6,293
55	5,130	6,118
56	5,232	6,202
57	5,340	6,292
58	5,448	6,380
59	5,563	6,472
60	5,677	6,671

### OVERALL SAGS FOR ESSILOR CUSTOM CONTACT LENS SCLERAL LENSES

DIAMETER ( <i>PROLOOK</i> )	PROLOOK 16.6
40	3,891
42	4,034
44	4,183
46	4,336
47	4,417
48	4,499
51	4,754
54	5,034

# Scleral Fitting System

## Fitting Guide



### INITIAL LENS EVALUATION- USE NaFI

<b>Central</b>	250-300 microns clearance if evaluation done < 30 mins of lens settling (don't trust your over-refraction) 300-350 microns clearance - Or - 2/3 to 3/4 of the lens thickness as clearance <b>**1D change = 85 microns**</b>
<b>Limbus</b>	More than 1/2 lens thickness Make sure to clear limbus with NaFI <b>Recommended clearance = 150 microns</b>
<b>Landing Curve (12.75mm)</b>	Should land evenly onto sclera Look for tiny fluorescein ring around outer edge If no ring, go to 13.50/15.00 landing and peripheral If NaFI was placed in the bowl initially, No NaFI should be present. No shadows or compression/blanching should be observed

### POOR VISION

<b>Cylindrical over-refraction</b>	If a consistent cylinder, or >0.75D, order front toric
<b>Poor wettability</b>	<b>Very important to use soap without lotion or moisturizer</b> Remove, re-clean, and rewet ... check vision again If due to ocular surface disease, order with Hydra-PEG

### TROUBLESHOOTING - CENTRAL

<b>Large central bubble</b>	Insertion bubble- remove, refill, and re-apply. Bubble does not indicate a wrong SAG.
<b>Central touch</b>	Increase by 200 microns Compensate power accordingly
<b>Diffuse corneal staining</b>	Double check fill solutions- make sure preservative free, recommend FDA approved solutions

### TROUBLESHOOTING - LIMBUS

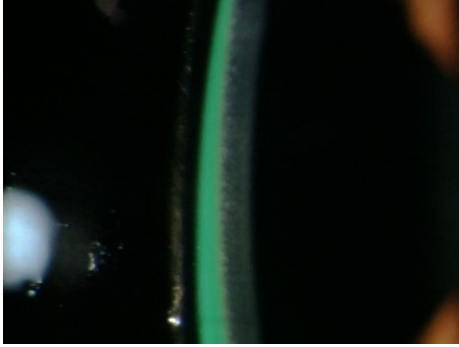
<b>Encroachment</b>	Not clearing the cornea laterally For .4mm more corneal chamber, compensate 170 microns less height and compensate power accordingly Order 0.4mm larger OAD and OZ
<b>Limbal touch or low clearance May or may not observe NaFI Staining</b>	Add 4D reverse, compensate base by 170 microns, and compensate power accordingly
<b>Symptoms:</b> - Discomfort after wear - Transient blur after removal - Conjunctival prolapse	Add 8D reverse geometry, compensate base by 340 microns, and compensate power accordingly Prolapse may occur when limbal or landing curve is too steep

### TROUBLESHOOTING - LANDING CURVE

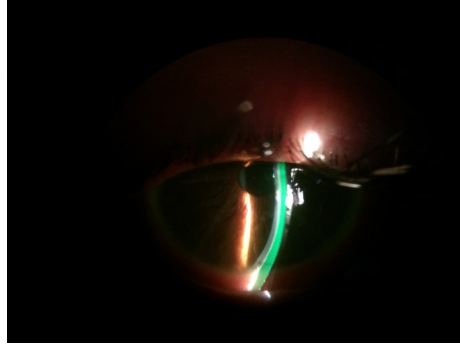
<b>Blanching/Compression</b>	Order 0.75mm flatter landing and peripheral curves =13.50mm landing curve and 15.00 mm peripheral curve
<b>Compression in one meridian only, or lift in other meridian (will observe shadows and/or migrating bubbles)</b>	Order toric PC =11.25 x 12.75 landing curve Evaluate the horizontal and vertical landings independently and adjust them independently of each other

# Scleral Fitting System

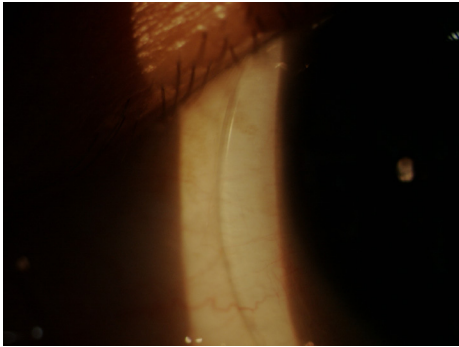
## Fitting Guide



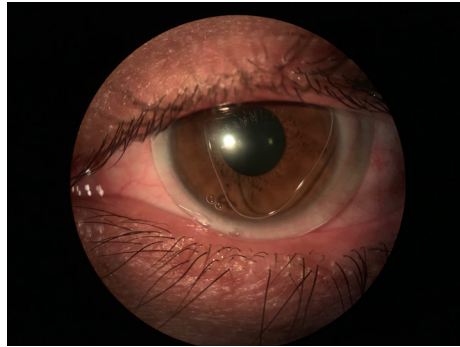
**ADEQUATE CENTRAL CLEARANCE**



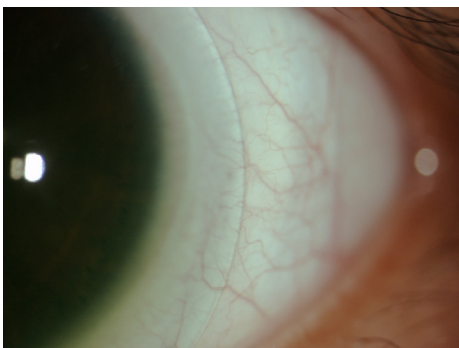
**EXCESSIVE LIMBAL CLEARANCE**



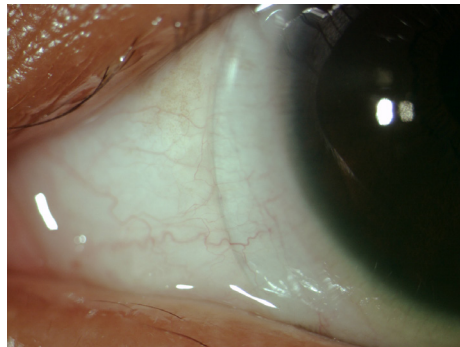
**ADEQUATE EDGE**



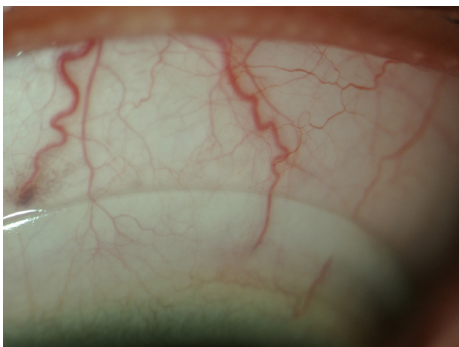
**EXCESSIVE EDGE LIFT**



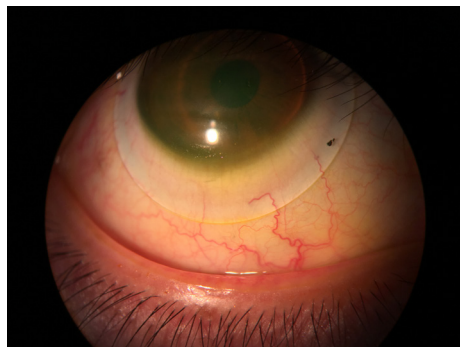
**EDGE IMPINGEMENT**



**LIMBAL HYPEREMIA WITH  
IMPINGEMENT**



**EDGE COMPRESSION**



**MILD COMPRESSION**



**COMPRESSION AFTER LENS REMOVAL**